

Learn, Serve and Grow

Ministry Opportunities at
St. Mark's Lutheran Church
by The Narrows



God's work, our hands.

6730 North 17th Street, Tacoma, Washington 98406

Phone: 253.752.4966 Fax: 253.752.4990

email: office@smlutheran.org

website: www.smlutheran.org

2	Learn, Serve and Grow

Learn, Serve and Grow

Our Mission Statement

St. Mark's is a people and place for God's grace. We are a baptized and believing people claimed by Christ. Therefore, we call all people to Worship and Witness, Learn and Serve, Share God's Word and Sacraments, Reach Out with Words and Deeds of Love.

5 Ministry Goals

- 1) Engage every member in transformational ministry.
- 2) Nurture communities of meaning, purpose, and care.
- 3) Strengthen administrative services to accomplish mission goals.
- 4) Link facility use and future plans for development with ministry and stewardship goals.
- 5) Nurture a congregational culture which engages all generations in the faith development of children, youth and families.

St. Mark's Seven Ministry Areas and Key Staff Contacts

Christian Education

Pr. Rebecca Shjerven
 rebecca@smlutheran.org, ext. 102 or
 Ingelaurie Lisher, Associate in Ministry
 ingelaurie@smlutheran.org, ext. 104

Congregational Care

Pr. Jan Ruud
 jruud@smlutheran.org, ext. 101 or
 Visitation Pr. Otto Tollefson
 otollefson@aol.com, 360-438-0552

Outreach

Pr. Jan Ruud
 jruud@smlutheran.org, ext 101

Peace & Justice

Pr. Rebecca Shjerven
 rebecca@smlutheran.org, ext. 102

Stewardship

Parish Administrator
 Ministry Coordinator

Worship & Music

Pr. Jan Ruud
 jruud@smlutheran.org, ext.101 or
 Danielle Lemieux (Children & Youth)
 danielle@smlutheran.org, ext 105
 Cooper Sherry (Blended & Traditional Worship)
 coop-n-sarah@nventure.com
 Darren Kerbs (Contemporary Worship)
 darrenkerbs@hotmail.com

Youth & Family

Pr. Rebecca Shjerven
 rebecca@smlutheran.org, ext. 102 or
 Ingelaurie Lisher, Associate in Ministry
 ingelaurie@smlutheran.org, ext 104

Table of Contents

Worship Volunteer Opportunities	4
Children's Ministry Opportunities	
Children's Faith Formation	6
Children's Music	7
Other Opportunities for Children	8
Youth Ministry Opportunities	
Youth Faith Formation	9
Youth Music	10
Other Opportunities for Youth	11
Youth & Adult Opportunities	
Youth & Adult Faith Formation	12
Youth & Adult Music	14
Other Opportunities for Youth & Adults	15
Elected & Appointed Positions	24
Index	26

WORSHIP VOLUNTEER OPPORTUNITIES

Acolytes

Ages:

Children and youth assist with lighting the candles and the offering. The Worship & Music Team is seeking ways to involve children more in worship. The Worship & Music Team is developing a new scheduling system that will begin in January 2010.

Contact: Pastor Rebecca Shjerven, rebecca@smlutheran.org

Altar Guild

Youth & Adults

Altar guild members are responsible for making sure that linens are put out for communion each service, the chalices are filled with wine and grape juice, and the bread is ready to go each Sunday morning. There are two shifts that need to be filled each Sunday. The first shift is from 8:00 a.m. to 9:45 a.m., setting up before and cleaning after the 8:30 a.m. service and setting up communion for the 9:45 a.m. service. The second shift is from 10:30 a.m. to 12:00 p.m., cleaning after the 9:45 a.m. service and setting up and cleaning after the 11:00 a.m. service.

If you cannot serve in these particular shifts, Altar Guild also has other important duties that need to be filled, such as refilling altar candles, replacing eternal candle (done once a week), putting up the appropriate banner for the church season, keeping wine/ white grape juice stocked in sacristy, checking once a year to make sure Eternal candles and candle oil is stocked, picking up Communion bread at Great Harvest, and cleaning/ironing Communion linens for all three services. Altar Guild is currently in need of a scheduling coordinator as well.

Contact: Jan Pence, janpence@smlutheran.org

Communion Servers

Youth & Adults

Communion servers distribute the wine or juice, and the bread during the Lord's Supper.

Contacts:

8:30 a.m. service: Dorothy Moe, dottie3131@harbornet.com

9:45 a.m. service:

11:00 a.m. service.



Greeters

All Ages

A greeter welcomes all worshipers as they enter the church for all three services on Sunday mornings. The greeter is the friendly face of St. Mark's who warmly greets, welcomes, acknowledges and provides help and information as needed. Training is available for this worship volunteer position.

Contacts:

8:30 a.m. service: Marcia Moe, moeandmoe@comcast.net or Janet Grant, janetgrant@hotmail.com

9:45 a.m. service: Darren Kerbs, darren@smlutheran.org

11:00 a.m. service: Karen Grams, kgrams@nventure.net or Rolf Morstad, rolfmor@harbornet.com

Projectionists

Youth & Adults



Hymns, prayers, and other images are projected onto the large screen in the sanctuary during the services. Volunteers are needed to run the projector. Training is available.

Contact: Darren Kerbs
darren@smlutheran.org

Scripture Readers

All ages



Volunteers read the lessons during the Sunday morning services. The lessons are sent to the volunteers the week before the service, so the readers may have time to practice.

Contact:

8:30 a.m.: Marcia Moe,
moeandmoe@comcast.net or

Janet Grant,
janetgrant@hotmail.com

9:45 a.m.: Darren Kerbs,
darren@smlutheran.org

11:00 a.m.: Karen Grams,
kgrams@nventure.net or
Rolf Morstad,
rolfmor@harbornet.com

Sound Assistants

Youth & Adults



A Sound Technician works during the worship services on Sunday mornings and occasionally at other services. The Sound Technician will train Assistants (adults or youth) to help and be available for special events.

Contact:

Pastor Jan Ruud
jruid@smlutheran.org

Ushers

All ages



An usher greets and welcomes all worshippers as they approach and enter the Sanctuary for all three Sunday morning services. The usher is a friendly face of St. Mark's who warmly welcomes, distributes worship bulletins, and oversees the congregational physical well-being during worship. The Usher also directs/leads worshippers to available seating, addresses emergencies, leads movement for offerings, communion, and paper requests (prayer/visitor cards). Training is available for this worship volunteer position.

Contact:

8:30 a.m.: Marcia Moe,
moeandmoe@comcast.net or
Janet Grant, janetgrant@hotmail.com

9:45 a.m.: Darren Kerbs,
darren@smlutheran.org

11:00 a.m.: Karen Grams,
kgrams@nventure.net or
Rolf Morstad,
rolfmor@harbornet.com

CHILDREN'S MINISTRY OPPORTUNITIES

Children's Faith Formation

Sunday School

Ages: 3 - Grade 5

Sunday School provides children from age 3 through 5th grade with a weekly faith-forming experience that engages them in both large group opening time and age-grouped classroom learning as they experience singing, sharing, praying, serving, and exploring God's word together. Children gather with trained and committed volunteers each Sunday morning at 9:30 in the Children's Faith Center. Children learn using the new lectionary-based "Spark" curriculum designed to actively engage them with the Bible. Children grow in friendship with one another and in relationship with God. They participate in the community of faith with intergenerational activities, opportunities for service, and by joining with the congregation during communion twice each month.

The littlest preschoolers (3 and 4 year olds) actively participate in multi-sensory hands-on activities and an engaging Bible story time.

Volunteers are needed to be part of teaching teams for each grade level.

Meets every Sunday from 9:30 a.m. - 10:45 a.m.

Contact: Char Leone, charleneleone1@aol.com



Vacation Bible School

Ages: 2 - Grade 6

August 2-6th

Each year at the end of July or beginning of August, we reach out into the community around us to share the good news of Jesus. All parts of our facility are used as members and non-members alike, of all ages, learn while having a great deal of fun. Teachers, assistants, craft leaders and helpers, snack providers, and musicians all are needed.

Contact: Ingelaurie Lisher, ingelaurie@smlutheran.org



Christmas Program

Ages: Preschool - 5th Grade

All children Preschool through 5th grade are invited to participate in this program that takes place during the yearly Advent Festival, an intergenerational event. Children present a musical describing the Christmas story through speaking, singing and dancing, incorporating Advent and Christmas carols from around the world. Practices take place during Sunday School as well as on Wednesday evenings during children's choir practices. This musical is part of a congregational event that includes a meal, fellowship and additional music from other St. Mark's music ensembles.

Contact: Danielle Lemieux, danielle@smlutheran.org or

Char Leone, charleneleone1@aol.com, 253-566-1050



Children's Music Opportunities

Babies of St. Mark's

Ages: 0-3 (with Parent/guardian)

Wednesday 5:15-5:45 p.m.



St. Mark's offers music classes for newborns to 3-year olds that utilizes music and movement techniques shown by research to have amazing benefits for children, encompassing musical, physical, emotional, social and cognitive growth. These classes teach parent/guardian and child musical play that can extend to play at home. For more information on the benefits of musical play, please visit www.musikgarten.org.

These classes are for both babies/toddlers and parent(s)/guardian(s) - it is essential that at least one adult/child pair participate when attending classes. Classes are open to all members and non-members.

Joyful Noise Choir

Ages: 4 - 1st Grade

Wednesday 5:15-5:45 p.m.



Children learn to find their singing voices through musical play and dance. Songs are presented during Sunday morning worship services as they are ready. Children also learn one musical based on a Biblical story. Practices take place weekly, September through May. This choir is open to all children, both members and non-members.

Jubilation Choir

Grades 2 - 5

Wednesday 5:45-6:30 p.m.



Jubilation Choir is open to all children, both members and non-members. Children learn to use healthy vocal technique to lift their voices to God. This choir incorporates all styles of music (contemporary, gospel, traditional, global, etc.) and learns one and two-part music to present at Sunday morning worship services as they are ready. They also present one musical a year, based on a Biblical story. Choir rehearsals take place September to May.

Children's Chimes

Grades 2-5

Wednesday 6:30-7:15 p.m.



Children's Chimes choir is open to all children, both members and non-members. Children learn to read notes and music symbols/language as well as chime ringing technique. Because each child is an integral part of the whole, consistent weekly attendance is required. Children ring for Sunday morning worship as music is ready, September through May.

An important part of choir is the positive fellowship children share with each other. Choir members form strong friendships as they are together each week making music to glorify God. Children also learn how their musical gifts enhance a community's worship experience.

Contact Danielle Lemieux, danielle@smlutheran.org, for more information about Children's Music Opportunities

Other Opportunities for Children

Children's Faith Journey

Ages: 4- 5th Grade

Dates: Wednesday, 6:00-7:15 p.m.

Children of elementary age are welcomed to join along in a journey of faith and friendship on Wednesday evenings. Children will meet together in a group while their parents may be gathering with other adults for Adult Faith Journey or Bible study. However, all children are welcomed as we begin immediately after dinner, approximately 6:00 until 7:15 p.m..

The 12-week Children's Faith Journey will engage children in Bible stories, encourage prayer life, and explore symbols and seasons of our faith life together in a faith nurturing environment of spiritual wonder and discovery that follows a path of Godly Play® to help children become more aware of God's friendship and grace in their lives. We will focus four weeks on selected Bible stories, four weeks on prayer practices, and four weeks relating to Lent and Easter.

Contact: Char Leone

charleneleone1@aol.com

Care of Creation Team

All Ages

Children are invited to participate in Care of Creation events. The team provides leadership in fostering and modeling environmental stewardship within the church community as well as within the broader community. Activities include hikes around the Puget Sound and the showing of movies with environmental stewardship themes such as Wall-E.

Contact: Tom Hulst,

thulst@harbornet.com

Acolytes

Grades 2-12

Children and youth assist with lighting candles, offering and communion.

Contact: Danielle Lemieux

danielle@smlutheran.org

Nursery Care Program

Sundays:

8:00 to 12:30 p.m.

12:30-2:00 p.m. (during Faith Journey)

3rd Monday of each month:

6:00 - 8:00 p.m.

Tuesdays:

5:15-7:00 p.m.

Wednesdays:

5:00-8:00 p.m.

1st Saturday of each month:

9:00-11:00 a.m.

Contact: Cindy Johnson, misscindy@yahoo.com, 253-565-3335 or

Teresa Handy, mamat1982@yahoo.com, 253-566-5971

YOUTH MINISTRY OPPORTUNITIES

Youth Faith Formation

Confirmation Ministry

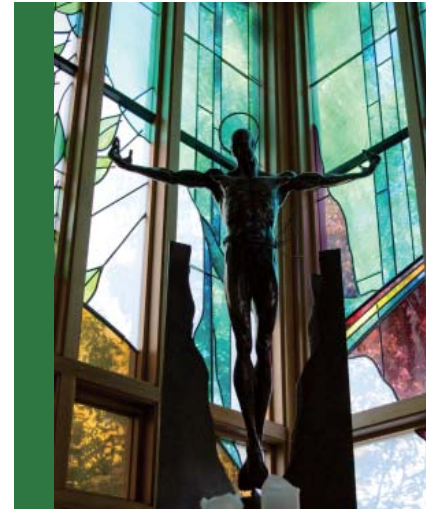
Ages: 7th & 8th Grade, 9th Grade

7th and 8th grade students meet on Sunday mornings in small groups.

Ninth grade students meet September to October to write a Faith Statement. They also attend a fall retreat, and serve a meal at Peace Community Center. The Affirmation of Baptism service is held on Reformation Sunday (The last Sunday in October).

Contact: Ingelaurie Lisher, ingelaurie@smlutheran.org

Meets every Sunday from from 9:30 to 10:45 a.m. in the Youth Wing.



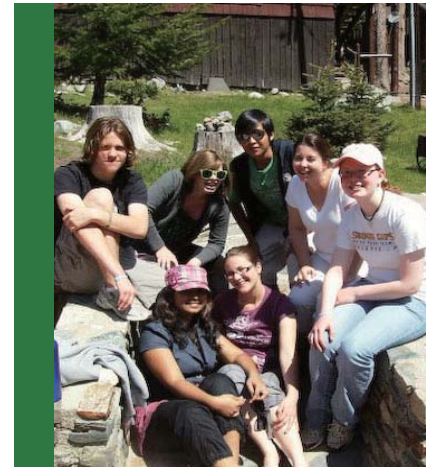
High School Bible Study

Ages: 9th - 12th Grade

Discussion group based on The Bible.

Contact: Ingelaurie Lisher, ingelaurie@smlutheran.org

Meets: 2nd & 4th Wednesday of each month from 6:00 - 7:15 p.m. in the youth room.



High School Sunday School

Ages: 9th - 12th Grade

Thematic discussions on faith and life. Video resources are often used.

Contact: Ingelaurie Lisher, ingelaurie@smlutheran.org

Meets every Sunday from 9:45 - 10:45 a.m. in the Fireside Room



Youth Music Opportunities

St. Mark's Ringers

Grades 6-12

Wednesdays, 7:15-8:00 p.m.



The St. Mark's Ringers is a youth bell choir that meets weekly. Because each member is an important part of the whole, consistent weekly attendance is a must. To become a member of this group, it is good if you can read music. If you cannot read music, note-reading classes can be made available. Bell ringing technique is taught each week during rehearsals. The St. Mark's Ringers play about once a month, when our music is ready, September through May.

Youth who are not members of St. Mark's are also very welcome to join - this group is open to all youth who'd like to participate.

Contact: Danielle Lemieux,
danielle@smlutheran.org

Youth Music Drama Team

Grades 6 - 12

Thursday, 5:30-7:30 p.m.



The Youth Music Drama Team (YMDT) is for all youth who enjoy singing, dancing, acting, and/or playing instruments - there is a place for all youth in this group. This team learns a full-length musical every other year (past shows include Godspell and Snoopy.) and two shorter musical theater programs in between (shows include For Unto Y'All and Uncle Phil's Diner: No Room at the Diner). YMDT members also attend a local production of a musical each year and work once a year with local professional and amateur actors and musicians from the area.

There are several different roles for youth within this group: actor, choir member, band member, backstage crew, sound/light technicians, etc.

Contact: Danielle Lemieux
danielle@smlutheran.org

Other Opportunities for Youth

Breakfast Club

Grades 9-12

Meets: 1st Sunday of each month
at 11:00 a.m. in the Fireside Room



Come for fellowship and food.

Contact:

Ingelaurie Lisher, ingelaurie@smlutheran.org

JR ALYVE Youth Group

Grades: 6-8

Meets: 6:00 - 7:15 p.m. 1st & 3rd
Wednesday



This is a time of fellowship, discussion, prayer and fun.

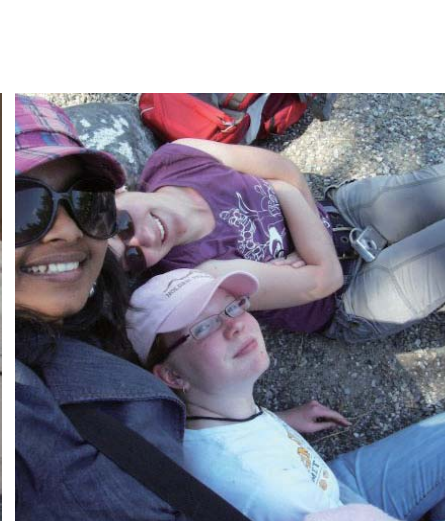
The JR ALYVE group also meets at various times throughout the year for fellowship and service activities.

Contact:

Linda Wimberley
ljwimb@aol.com

SR ALYVE Youth Group

Grades: 9-12



SR ALYVE Youth Group meets at various times throughout the year for fellowship and service activities.

Contact:

Ingelaurie Lisher,
ingelaurie@smlutheran.org

YOUTH & ADULT MINISTRY OPPORTUNITIES

Adult Faith Formation

Sunday Mornings (classes begin September 13th)

All classes meet in the classrooms at the south end of the Parish Commons.

8:30 a.m. People of Faith - a Book of Faith series

For more information, check out www.bookoffaith.org. Bring your questions and your sense of humor. . .no biblical expertise is required. Grab a cup of coffee and join the conversation.

9:45 a.m. Adult Forum Series

A variety of topics, which are designed to challenge and enrich, are discussed each week. Check "Parish Life" each week for Sunday's topic and teacher. All are welcome.

11:00 a.m. "Human Sexuality: Gift and Trust"

For several weeks, the latest ELCA Social Statement, adopted at the 2009 Churchwide Assembly in August, will be examined and discussed. Sessions will include conversation about scripture and Lutheran theology, marriage and social structures that enhance trust in relationships, sexuality and moral discernment. The discussions in this class will seek to model trust and respect in public deliberation, preparing us to be "salt" and "light" for conversation in society. You may download a copy of the ELCA Social Statement at www.elca.org/WhatWeBelieve. Copies will be available at the sessions.

Midweek Studies (note start dates for each class)

Tuesday, 10:00 a.m. "Making Moral Decisions"

Begins Sept. 8 This course of study meets at the Mortvedt Center at Tacoma Lutheran Retirement Community (enter on Vassault and travel 1 block) The theme is based on a book by Paul Jersild, and the group will follow his outline. Everyone interested is welcome to the course, taught by Dick Rodning. Come for discussion and fellowship. There are no ironclad answers.

Tuesday 5:30 p.m. "Fully Alive" Women's Bible Study (Fireside Room)

Begins Oct. 6 Childcare is provided as women come together to study scripture and offer care and support to one another. Hosted by Sherri Maiura.

Wednesday 9:30 a.m. Women's Bible Study (Parish Hall Classroom 1)

Begins Oct. 14 Ruth Leistikow leads a study and discussion of various books of Scripture. All women are cordially invited to attend.

Wednesday noon Bible Study at Forza Coffee Shop, N. 21st and Pearl

Begins Sept. 23 Join Pastor Shjerven and others to study scripture and pray together. Bring your own bible and any \$\$ you might want to spend on goodies.

Wednesday 6:00pm Church Night Study (Fireside Room)

Begins Sept. 23 Paul's letter to the Galatians, "the Magna Carta of Christian liberty" will be studied this fall. Come for a simple supper before or after class and a time of learning with Pastor Shjerven. Childcare provided in the nursery; music and youth programs take place throughout the evening.

Other Enrichment Opportunities

<u>Wednesday 8:00 p.m.</u> Begins Sept. 23	<u>Devotional Classics Discussion Group (Parish Commons Classroom 1)</u> This is the weekly gathering for those who are reading “Devotional Classics: Selected Readings for Individuals and Groups” (edited by Richard Foster and James Bryan Smith). Together we will reflect on the questions of the text and share our own questions and observations. For more information on this resource, or to order yourself a copy, please check out www.renovare.org .
<u>Online</u>	<u>Devotional Classics Online Discussion Group</u> (see description above)
<u>Saturday 9:00 a.m. once/ month</u>	<u>St. Mark’s Book Group (Parish Hall Classroom 1)</u> If you like to read and to gather with others for coffee and conversation, this group is for you. Mark your calendars and visit your local library.

Youth & Adult Music Opportunities

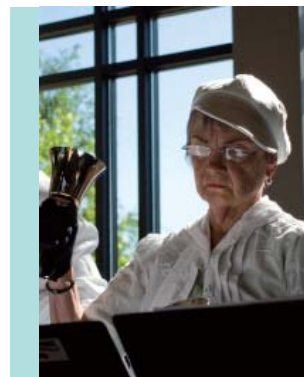
Bells of St. Mark’s

Ages: Adults and Mature High School (as determined by the director)

This group is the most advanced bell choir at St. Mark’s. To be successful, members need to know how to read music and commit to weekly rehearsals, missing when only absolutely necessary. No bell ringing experience is necessary to join - all bell techniques will be taught during rehearsals. If you would like to join but need to learn to read music, note-reading classes can be made available. The Bells of St. Mark’s rehearses weekly, September through May. This choir is open to all adults, both members and non-members.

Contact: Danielle Lemieux, danielle@smlutheran.org

Rehearsals: Tuesdays from 7:00 – 8:30 p.m.



Celebration Ensemble

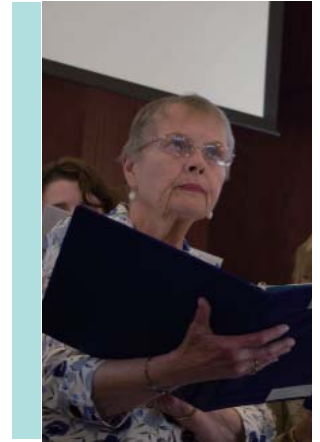
Ages: Adults

Celebration Ensemble is an ensemble of vocalists and instrumentalists that serve through musical leadership for the 8:30 a.m. worship service on Sunday mornings, September through June. Because this group only meets once a month, which means there is limited rehearsal time in which to learn the music, the group consists mainly of people who have good sight-reading skills and previous choral experience. Celebration Ensemble members also collaborate several times a year with other St. Mark's ensembles for special music.

Contact: Cooper Sherry, coop-n-sarah@nventure.com, 253-752-0554

Rehearsals: 1st Saturday of the month, 9:00 - 10:30 a.m. &
Sunday mornings 7:30 a.m.

Service Leadership: 8:30 a.m. service Sunday mornings



Chancel Choir

Ages: Mature High School and up

The Chancel Choir is the music leadership group for St. Mark's 11:00 a.m. service each Sunday morning, September through May. The choir sings a variety of music, from traditional to contemporary, gospel to global. Fellowship, devotional time and prayer are important aspects of this group's weekly practice. Chancel Choir members also collaborate once or twice a year with other St. Mark's ensembles for special events and services.

Contact: Danielle Lemieux, danielle@smlutheran.org or

Cooper Sherry, coop-n-sarah@nventure.com, 253-752-0554

Rehearsals: Thursdays, 7:30 - 9:00 p.m.

Service Leadership: 11:00 a.m. service Sunday mornings



Worship Team

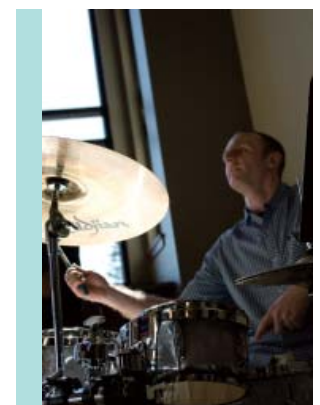
Ages: Adults

The Worship Team is for adults 18 years and older with a desire to lead worship and praise God through contemporary Christian popular music. Their repertoire of music also reaches to other music genres, including blended, gospel and global. This group leads worship at the 9:45 a.m. service and rehearses every week, year-round. Worship Team members also collaborate several times a year with other St. Mark's ensembles for special music.

Contact: Darren Kerbs, darren@smlutheran.org

Rehearsals: Wednesdays, 6:00-7:30 p.m.

Service Leadership: 9:45 a.m. service Sunday mornings



Other Youth & Adult Opportunities

Adult Faith Formation Team

All Ages

This team discusses and plans for Adult education opportunities (forums, speakers, etc.)

Contact:

Pastor Rebecca Shjerven
rebecca@smlutheran.org

Bread For the World

All Ages



Volunteers gather to write letters to government leaders about hunger worldwide.

Contact:

Norm Orth
normlorth@aol.com
253-756-7633
Paula Friedmann
pfpc@wamail.net
253-759-3881

Care of Creation

All Ages



The purpose of the Care of Creation team is to provide leadership to the St. Mark's family in fostering and modeling environmental stewardship within the church community as well as within the broader community. Past activities have included showing the film Inconvenient Truth on Global Warming, a field trip to the Skagit River to see wintering bald eagles, eco-friendly gardening tips and activities leading up to Earth Day. The team welcomes suggestions for future activities that celebrate God's creation and encourages all members to join in our activities.

Contact:

Tom Hulst
thulst@harboret.com
253-460-2683

Children & Youth Faith Formation Team

All Ages

This team of leaders works together to design, nurture and care for the faith formation of our children and youth.

Contact: Char Leone
charleneleone1@aol.com

Choir Librarians Children & Youth Activity Leaders

Youth & Adults



Help is needed sorting and filing music for various choirs.

Contact:

Danielle Lemieux,
danielle@smlutheran.org

Ages: 21 and older



Adult volunteers are needed to assist with various music and youth events.

All participants are subject to background checks and personal interviews.

Contact:

Ingelaurie Lisher
ingelaurie@smlutheran.org
Danielle Lemieux
danielle@smlutheran.org

Christmas Family Project

All Ages



St. Mark's individuals are assigned to low income families in our area and help to provide a very merry Christmas.

Contact:

Judy Droubay
jcdroubay@hotmail.com

759-6720

Mary Jo Holum
752-3304

Cinco de Mayo Auction

All Ages



This is the main fundraiser for the Mexico Mission Trip. Donate and bid on others' donations - lots of fun and you help us build houses too.

Contact:

Candy Gustafson
whmtncmg@earthlink.net
756-8088

Congregational Care Team

Ages: all confirmed members

This group meets monthly to brainstorm and receive reports from sub-committees.

Contact: Karen Grams, krams@nventure.com

Fair Trade

All Ages

Fairly Traded coffee, tea and chocolate are available for purchase the first of each month. Each fall a Fair Trade Bazaar is held at St. Mark's where other items from all over the world may be purchased.

Contact: Christine Harris, christine@raincity.com, 253-460-0372



Faith Journey Companions

Ages: Youth & Adults

Members of St. Mark's walk side by side with new people in a Faith Journey that leads them to baptism or affirmation of baptism.

Contact: Pastor Jan Ruud, jruud@smlutheran.org



Finance Team

Confirmed Members, appointed by Church Council

The Finance Team oversees management of the church's finances.

Contact: John Wascher, jwascher@mac, 503-6765

Meets the second Monday of each month at 7:00 p.m.



Fellowship Team

All Ages

This group plans all kinds of fun get-togethers including picnics, other meals, hikes, trips, Warm up for Winter gatherings in members' homes and much more.

Contact: Judy Summers, judysummers521@gmail.com, 253-460-1442

Gay Straight Alliance

All Ages

This organization meets monthly for a potluck and discussion. The GSA group's identity statement is: "We are an intergenerational gathering of St. Mark's members and friends who acknowledge and celebrate human diversity, particularly sexual orientation and gender identity, as an expression of God's creative purpose. We journey together in gratitude for God's love, which reconciles and makes us all one in Christ. We seek to strengthen our church community by sharing our experience, encouraging, enjoying and learning from one another. We acknowledge injustice and strive to make this gathering a place of safety and healing for all who participate."

Contact: Jan Ruud, jruud@smlutheran.org

Meets: 3rd Monday, 6:00 p.m. - 8:00 p.m.



Habitat for Humanity

Youth & Adults

St. Mark's builds as a group at least one day a year. Tom can also get you connected to work other days. Other opportunities come up also to work in a store or provide snacks or lunches.

Contact: Tom Geary, TWGeary@aol.com, 549-2668



Hospitality Assistance

All Ages

St. Mark's regularly offers coffee hour (with donuts) on Sunday morning and a 5:45 p.m. meal on Wednesdays right before Faith Journey and Adult Bible Study. Volunteers help with set up, serving, clean up and providing food for memorial receptions.

Contact: Becki, Christian, bekkic924@hotmail.com, 253-301-4052



Living Stones Prison Congregation

Ages: 18 and up

Once each year members and friends of St. Mark's attend worship with the men who are part of the ELCA congregation at Washington Correctional Center in Shelton.

Contact: Pastor Rebecca Shjerven, rebecca@smlutheran.org

Lutheran Home Bus Driver

Ages: 25-69

St. Mark's offers transportation on Sunday mornings for people who are unable to drive. The Tacoma Lutheran Retirement Center allows qualified drivers to use one of their buses. More drivers are needed. If you are accustomed to driving larger vehicles and are between the ages of 25 and 69, please consider joining this team.

Contact: Rolf Morstad, rolfmor@harbornet.com, 253-759-0563

or Arlyn Saathoff, arlyn.saathoff@clearwire.net, 253-851-1584



Lutheran Volunteer Corps

All Ages

Lutheran Volunteer Corps offers people a one-year opportunity for spiritual and personal exploration while working for social justice, living in intentional community and simplifying their lifestyles. Volunteers are matched with social ministries and non-profit organizations. LVC is active in the Tacoma area and many LVCrs have worked with Peace and Justice organizations that St. Mark's supports.

Contact: Ray Shjerven, rshjerven@comcast.net, 253-858-5211



Lutheran World Relief

All Ages

Meets: Mondays, 9:00 a.m.-noon

A group meets weekly at St. Mark's to sew and tie quilts. If you're not available on Mondays, you could work at home cutting fabric squares, sewing diapers or creating baby hats. The group also creates Quilts, Health Kits, School Kits, baby hats, Layettes and Midwife Kits. Donations can also be made to the Lutheran Boxcar Fund.

Contact:

Vangie Billingsley, 756-7766
or Elaine Rodning, 761-9198,
decnelan@att.net

Musicals Assistance

Ages: Adults

With the various musicals presented by children and youth, we are in need of volunteers to help with all aspects of musicals production.

Contact:

Danielle Lemieux

danielle@smlutheran.org



Mission Trips

Ages: Youth & Adults

Mexico

Every year, St. Mark's takes a crew to Mexico the last week of June to build houses and provide activities for the children in the neighborhood. This 9 day trip is intergenerational—high school age and older are invited to apply to participate. We need experienced builders, less experienced helpers, and people with gifts of compassion and organization as well.

Contact: Pastor Jan Ruud

jruud@smlutheran.org

Montana

This July mission trip is for youth grades 6-9 (completed). The trip provides opportunities for Middle School youth to learn leadership skills, build relationships and serve the larger church by helping the community of Our Savior's Lutheran Church on the Rocky Boy Reservation

Contact: Bruce Sadler

bcsadler@harboret.net

253-564-4071

China Service Ventures

July 2010 for youth and adults. An informational meeting will be held Sunday, October 18th at 12:00 p.m. with Pastor Steve Ray.

Contact: Ingelaurie Lisher

ingelaurie@smlutheran.org

Nativity House

Ages: Youth & Adults

St. Mark's serves a hearty, healthy mid-day meal every 4th Saturday to an average of 200 people at this drop in day shelter in Tacoma. This is a great way for families to serve together and really make a difference in the lives of those who are less fortunate. If you are unable to serve the meal, you may donate bottles of juice or cookies (homemade especially desired). Place in the bin in the narthex the week before we serve. Donations of clothing are occasionally needed—watch the Parish Life for updates.

Contact:

Melanie Summerour

summerour@msn.com

857-8872

New Visitor Phone Calls

Volunteers thank people for worshipping with us and invite them to come again.

Contact: Pastor Jan Ruud,
jruud@smlutheran.org



Newsletter Columnist

All Ages



Become a feature article writer for the monthly newsletter, *The Viewpoint*. Interview congregation members, highlight activities in the congregation and promote new programs.

Contact:

Lisa Lindholm

lisa@smlutheran.org

253-565-1340

Office Support

All Ages



Assist the office staff with occasional mailings, monthly newsletter assembly, answering the phone and other office duties.

Contact:

Jan Pence

janpence@smlutheran.org

253-752-4966

Outreach Team

All Ages

Meets: 1st Tuesdays

7:00 p.m.



The Outreach Ministry Team leads us in the ministry of extending the hospitality of Christ by inviting, welcoming, and walking with others in their journey of faith. This team also coordinates the work of communicating the mission of our congregation to newcomers and to the community at large via print and electronic media.

Contact:

Pastor Jan Ruud

jruud@smlutheran.org

Parish Nursing

Registered Nurses



As a member of the pastoral care team, the parish nurse works to address the physical, emotional, and spiritual needs of the congregation. Congregational parish nurses are not expected to be primary health care givers, rather they coordinate health programs and facilitate the use of church and community resources.

Contact:

Ruth Saathoff

ruthsaathoff@clearwire.net

253-851-1584

Peace Community Center

All Ages

Located on the hilltop in Tacoma, Peace Community Center has been a key companion with St Marks for years. Twice a year St. Mark's members prepare and serve a meal at the Center. St. Mark's members are also involved with tutoring local students each week.

Contact: Phil Birkeland, p.birkeland@comcast.net, 253-564-9109 (tutoring)

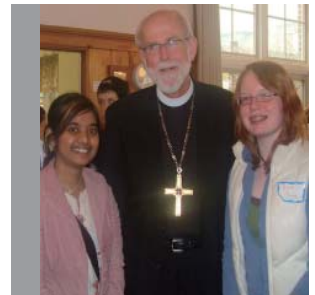
John Wascher, jwascher@mac, 253-503-6765

Peace & Justice Ministry Team

All Ages

The Peace & Justice Ministry Team equips, motivates and supports the members of St. Mark's in extending expressions of Christian compassion to the poor and oppressed and to persons in need. We look out to Tacoma and the world to identify social injustice and need; we connect with social service agencies and other groups who are addressing these challenges; we provide opportunities for St. Marks people to learn about these issues and to get involved.

Contact: Melanie Summerour, summerour@msn.com, 253-857-8872



Pierce County Hunger Walk

All Ages

Walk, donate, or do both. In 2009 the walk will take place October 10.

Contact: John Reitan, dlj2reitan@aol.com, 253-752-3737

Prayer Shawl Ministry

All Ages

When you combine knitting and praying, what do you get? A tangible, warm, beautiful sign of God's love to wrap around someone who is hurting. Can be done at home, while waiting for appointments or in groups.

Contact: Jan Pence, janpence@smlutheran.org



Property Team

The Property Care Team helps us to be good stewards of all the physical properties that have been entrusted to us. This includes regular maintenance and improvements to the building and grounds. You can join them on a weekly basis or choose a special task and do it on your own time schedule. Currently there is a Thursday crew which gathers every week to do a variety of tasks, both indoors and out. They also enjoy good fellowship around the coffee pot in the kitchen. There are also periodic clean up and special project days scheduled as needed. If you can't share your maintenance and cleaning skills every week, maybe you can help out a couple of days a years using a building skill of your choice.

Contact: Chuck Droubay, 253-759-6720

Meets Thursday mornings



Shrove Tuesday Pancake Feast

All Ages

Children, youth and adults of all ages are invited to join us the Tuesday before Ash Wednesday as we prepare for the beginning of the Lenten season. In addition to feasting on pancakes, craft activities are available for the children.

Contact: Ingelaurie Lisher, ingelaurie@smlutheran.org



Somali-Bantu Tutoring

Ages: 6th grade and older

Volunteers spend time with Somali Refugees tutoring them in various types of school work. There is also need for people to provide healthy snacks and occasionally there is a special request for clothing or school items.

Contact: John Summerour, summerour@msn.com, 253-857-8872

Meets: Wednesday evenings, off site

Stephen Ministry

Ages: 18 and older

Stephen Ministers supplement the pastoral staff by providing one-on-one care to people experiencing life transitions and challenges (for example: impending death, recovery from illness, loss of a job or a relationship, dealing with a chronic illness).

Contact: Sonja Yeager, sonjery37@yahoo.com, 253-761-3018



Stewardship Team

September is the month for this Living in Christ booklet and response forms. November is the month we have intentional conversations about financial stewardship, and make our Plans for Giving. Throughout the year, we offer educational and inspirational articles and temple talks about stewardship.

Contact: Sara Titus, saraetitus@comcast.net, 253-507-5321

Meets the 4th Thursday as needed at 7:00 p.m.



The Journey Young Adult Group

This is a group of young adults from University Place Presbyterian and St. Marks Lutheran Churches who are basically post-college to mid thirties. If you're single or married before kids come join us.

Come for fellowship, food, and fun. We usually explore a topic or theme for one to two months through short Bible studies, guest speakers, movie nights with discussion (recent viewings include Crash, Amazing Grace, Jesus Camp and Office Space Journey for the Vocation theme), and short service projects. Recent themes have been vocation, play, and spiritual gifts.

Contact: Mary Jo Larsen, chilerod12@hotmail.com, 253-686-9604

Meets: Thursdays at 7:00 p.m.

Welcome Center

All Ages

The Welcome Center is our one-stop information center for all who visit St. Mark's on Sunday morning.

Key Duties for volunteers:

1. Point people in the right direction for Sunday morning activities such as preschool, Sunday school, youth meeting rooms, adult education, etc.
2. Know the layout of the facilities (meeting rooms, offices, kitchen, bathrooms, where tables and chairs are stored, etc.)
3. Keep a record of visitors using our registry guest book.
4. If prompted, share significant upcoming events such as music programs, guest lectures, and special ministry team events, etc.
5. Wear your St. Mark's nametag. If you need a new one please see Jan Pence.

Contact: Kevin Hayes, kevinmhayes@comcast.net, 253-460-1795



Women of St. Mark's

All Ages

This active group of women hosts a fall retreat, an Advent brunch, and a spring luncheon, all with wonderful programs.

In addition, they support the ongoing work of Lutheran World Relief and share their talents with many of the ministries of St. Mark's.

A monthly Bible study meets the 4th Tuesday of each month at Mordvet Center (at Tacoma Lutheran Retirement Community). This group uses "Lutheran Woman Today" as its resource and is led by Sonja Yeager, sonjery37@yahoo.com.

Contact: Elaine Rodning, dicnelan@att.net, 253-761-9198 or

Carol Paulson 253-564-6838



Women
of the
**EVANGELICAL
LUTHERAN
CHURCH
IN AMERICA**

ELECTED & APPOINTED POSITIONS

Church Council

Confirmed Members, elected by the congregation

The Church Council has general oversight of the life and activities of this congregation. The Council leads the congregation in stating its mission, does long range planning, sets goals and priorities, and evaluates its activities in light of its mission and goals.

Contact: Pastor Jan Ruud, jruud@smlutheran.org

Endowment Fund Team

Confirmed Members, elected by the congregation

The Endowment Fund Team meets quarterly in the evening to manage St. Mark's endowment funds and plan educational events about wills and estate planning.

Contacts: Everett Holum, evholum@hotmail.com, 253-752-3304

Leadership Development Team

Confirmed Members, appointed by Church Council

Leadership Development Team seeks to strengthen the work of the staff and of congregational leaders by providing useful resources, mentoring, orientation and training, facilitation of meetings and retreats, and on-going support as it is needed.

Contact: Pastor Jan Ruud, jruud@smlutheran.org

Memorial Committee

Confirmed Members, appointed by Church Council

The Memorial Committee keeps track of all memorial gifts given to St. Mark's.

Contact: Sharon Steen, esteen819@harbornet.com, 756-8925

Nominating Team

Confirmed Members, elected by the congregation

Identifies and nominates candidates for congregationally elected positions

Contacts: Kim Meade, kimberly.meade@comcast.net, 253-759-9817

Preschool Board

Confirmed Members, appointed by Church Council

These appointed leaders make policies and oversee the health of St. Mark's Preschool.

Contact: Pastor Rebecca Shjerven, rebecca@smlutheran.org

Scholarship Team

Confirmed Members, elected by the congregation

Meets three times a year to prepare forms for, review submitted applications from, and distribute the scholarships to students attending Lutheran colleges or seminaries.

Contact: Scott Moor, moorfunfamily@wamail.net, 566-4927

Index

11:00 Forum	12	High School Bible Study	9
8:30 Forum	12	High School Sunday School	9
9:45 Fourm	12	Hospitality Assistance	18
Acolytes	4	Joyful Noise Choir	7
Adult Faith Formation Team	15	JR ALYVE	11
Altar Guild	4	Jubilation Choir	7
Babies of St. Mark's	7	Leadership Development Team	24
Bells of St. Mark's	14	Living Stones Prison Ministry	18
Bread For the World	15	Lutheran Home Bus Driver	18
Breakfast Club	11	Lutheran Volunteer Corps	18
Care of Creation Team	8	Lutheran World Releif	19
Care of Creation Team	15	Memorial Committee	24
Celebration Ensemble	14	Mission Trips	19
Chancel Choir	14	Musicals Assistance	19
Children & Youth Activity Leaders	16	Nativity House	19
Children & Youth FF Team	15	New Visitor Phone Calls	19
Children's Chimes	7	Newsletter Columnist	20
Children's Faith Journey	8	Nominating Committee	24
Choir Librarians	16	Office Support	20
Christmas Family Project	16	Outreach Team	20
Christmas Program	6	Parish Nursing	20
Church Council	24	Peace & Justice Ministry Team	21
Church Night Bible Study	12	Peace Community Center	21
Cinco de Mayo Auction	16	Pierce County Hunger Walk	21
Communion Servers	4	Prayer Shawl Ministry	21
Confirmation Ministry	9	Preschool Board	25
Congregational Care Team	16	Projectionists	5
Devotional Classics	13	Property Team	21
Endowment Committee	24	Scholarship Committee	25
Fair Trade	17	Scripture Readers	5
Faith Journey Companions	17	Shrove Tuesday Feast	22
Fellowship Team	17	Somali-Bantu Tutoring	22
Finance Team	17	Sound Assistants	5
Forza Bible Study	12	SR ALYVE	11
Fully Alive Bible Study	12	St. Mark's Book Group	13
Gay Straight Alliance	17	St. Mark's Ringers	10
Greeters	4	Stephen Ministry	22
Habitat for Humanity	18	Stewardship Team	22

Index

Sunday School	6
The Journey Young Adult Group	22
Tuesday Bible Study	12
Ushers	5
Vacation Bible School	6
Welcome Center	23
Women of St. Mark's	23
Women's Bible Study	12
Worship Team	14
Youth Music Drama Team	10



A Place for Grace

6730 North 17th Street Tacoma, Washington 98406

Phone: 253.752.4966 Fax: 253.752.4990

email: office@smlutheran.org

website: www.smlutheran.org