



# The Viewpoint

October 2009

Volume 56 No. 10

## Witness of the Scripture

By: Pastor Jan Ruud

“A story for all people, old story new to-day. A song of love and healing, a light to show the way.”

The words from the refrain of our theme hymn for this new ministry cycle have been going through my head all week. In that way, I guess, they have already become a theme for me in my own life. Today, when I recalled them, my thoughts went back to the sermon preached by the Presiding Bishop of the Evangelical Lutheran Church in America at the national assembly in August. At the beginning of his message, Mark Hanson said, “In more than one media interview prior to the assembly, the reporter’s questions made it seem that the story of this assembly had already been written. The story is one of anxiety and dissension leading to division. But the story of this assembly has not been written. You will be one of the many witnesses who tell the story. Your witness—the story you tell—will contribute to the shaping of what others hear and believe about our life together this week.”

Those words reflect a basic truth that we will be calling on all year. The stories we tell contribute to shaping what others hear and believe. Think about your own faith journey and how the stories told have shaped how you see and understand the world around you and how you have come to know God. That should give each one of us the encouragement we need to tell our own story in ways that help others hear and believe. This can happen around the dinner table, in the car, at work, at school, at a church meeting, in Sunday School,

or any number of other places along the way where we find ourselves in community with others. As Pastor Shjerven reminded us last month, our stories can also be shared in written form. We have been richly blessed by the collection of stories that have appeared in the last two devotional booklets produced at St. Mark’s. I know that many families have also been blessed by the care that one person has taken to write down his or her life story for future generations. In the months ahead be intentional about speaking and perhaps even writing the stories that are within.

Finally, continue to gather with eager hearts to hear and live the story of Jesus Christ. As Bishop Mark Hanson reminded us a little later in his sermon, any story we tell about who we are is ultimately connected to the much bigger story of who God is in Christ. “If we are to be true to the witness of the Scripture”, he said, if the stories you and I tell of this week are to be faithful and true, then we will tell the story of Jesus Christ, who is present in this place.” May that be our witness in all that we share with those around us. May we find deep joy in the hearing and telling of this ongoing, unfinished story of God’s faithfulness to all generations.



|                          |    |                           |    |
|--------------------------|----|---------------------------|----|
| Pastor’s Message         | 1  | Stewardship Ministry      | 13 |
| Christian Education      | 2  | Worship & Music Ministry  | 14 |
| Congregational Care      | 5  | Youth & Family Ministry   | 16 |
| Calendar                 | 9  | Birthdays & Anniversaries | 18 |
| Peace & Justice Ministry | 10 |                           |    |

# Christian Education

## Children's Faith Formation

By: Char Leone, Children's Faith Formation

With great appreciation, meet the children's teachers for 2009-2010. These people have made a commitment to teaching Sunday School as part of age-graded teaching teams for children age 3 through 5th grade. It is the responsibility of the community of faith to share in the faith formation of children. However, teachers are recognized as having a special partnering role with families in faith nurture and education of children and are grateful that they have chosen to serve.

Kim & Dave Andersen (3rd grade), Shelly Anderson (PreK-K), Kim Bucklin (5th grade), Linda Faaren (5th grade), Paula Friedman (1st & 2nd

grade), Marni Hamburg (1st & 2nd grade), Karl Hoseth and Alison Wigstrom-Hoseth (3rd grade), Susan New-som (PreK-K), Jayme Nitz (1st & 2nd grade), Mary Olsen (4th grade), Kirsti Ruud (Preschool-age 3 & 4), Phyllis Smith (PreK-K), Lindsey Spaulding (Preschool-age 3 & 4), Catherine Papagni-Terrill and Jack Terrill (3rd grade), Sara Titus (PreK-K), Heather Willis (Preschool-age 3 & 4), Ruth Young (4th grade).

Volunteers are needed for teaching positions throughout the year and there are currently 4 openings on the teams. Contact Char Leone at charleneleone1@aol.com or 253-566-1050 to talk about ministry opportunities in Children's Faith Formation.

## Youth Faith Formation

Confirmation Schedule October:  
**1st and 2nd year students:**

- Sunday, October 4—Worship at 9:45 a.m.
- Sundays, October 11, 18 and 25—Class/Small Groups
  - 9:30-9:45 Gathering time in the Youth Room - snacks
  - 9:45 head to small group spaces
- Saturday, October 24th—1st and 2nd year students to help with Confirmation brunch. Sign up to bring a food item or work a shift (9-10:30 or 10:30-12:00).

**6th Grade Sunday School** will be held in the Blue Youth Room from 9:30-10:45 a.m. each week. The class will be led by Bruce Sadler and Eric Williams, Jr.

**High School Sunday School** youth grades 10-12 meets in the Fireside Room from 9:45-10:45 a.m. 9th graders will join this class beginning November 1

### 3rd year students:

- Sunday, October 4—Worship at 9:45 a.m.
- Sunday, October 11—Class time in Youth Room 9:30-10:45 a.m. We will work on your faith statements.
- Wednesday, October 14—Serve at the Peace Community Center with Mentors 4:30-7:00 p.m.
- Saturday, October 17—Retreat 10:00 a.m. to 4:00 p.m. (meet at St. Mark's). Bring bibles, rough drafts of faith statements, paper, etc.).
- Sunday, October 18—Forza Coffee (off of Pearl and 21st) we will leave St. Mark's at 9:30 and be back by 10:45—please bring your faith statements to work on.
- Wednesday, October 21—Faith Statements are due to Pastor Ruud.
- Saturday, October 24—Brunch for students, mentors and families 10:00 a.m. to 12:00 p.m. at St. Mark's.
- Sunday, October 25—Affirmation of Baptism Service at 11:00 a.m. Please be at St. Mark's by 10:30 a.m. to get ready to go.
- Affirming their Baptism on October 25: Sela Neils, Noah Compton, Anna Grudzien, Antonio Patrick, Emma Parkins, Regan Stewart, Helena Laubach, Justin Oellerich, Morgan Hayes and Maddie Shjerven.

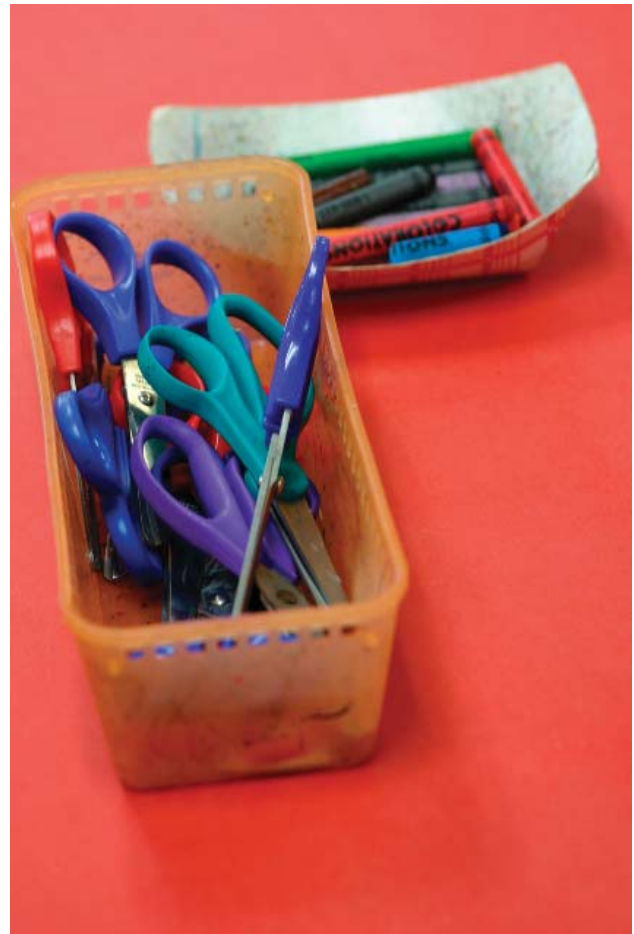
# Preschool News

By: Laura Ollerich, Preschool Director

St. Mark's Preschool is up and running with 30 students enrolled so far this year. There is still room for more, so tell a friend. There has been such positive feedback from parents about the new space. It is truly a dream come true for the school. Thank you to all who have helped to make such a wonderful space for the program. A special thanks to everyone who helped re-locate the playground. Children are able to use it more often in it's new location.

This month students will be studying about Dinosaurs, Fall, Pumpkins and Fire Safety. A trip to the Pumpkin Patch and the annual Pumpkin Carving Night are on the calendar for October

Stop by and visit. Teachers are here Monday-Friday 9:00 a.m. – 12:00 p.m.



# Sunday School Communion



Starting Sunday, October 4th, Sunday School children in grades PreK-K – 5th grade will be escorted into the Communion portion of the 9:45 Worship Service from their Sunday School classrooms. Children may receive Communion or a blessing.

Grades PreK-K through 2nd grade will join with the congregation on the first and third Sundays, and children in 3rd through 5th grade will join with the congregation on the second and fourth Sundays. Details relating to Communion instruction and procedures are being provided to families in a handout through Sunday School.

It is an honor to welcome children to Christ's table.

# Adult

## Faith Formation

### Sunday Mornings



| Time       | Title  | Leader  | Location                   |
|------------|--|---|----------------------------|
| 8:30 a.m.  | "A Gardener, Two Travelers and a Cheat"                    | Pastor Otto Tollefson                             | Parish Commons Classroom 1 |
| 9:45 a.m.  | Adult Forum Series on the Environment                      | varies week to week                               | "                          |
| 11:00 a.m. | ELCA Social Statement<br>"Human Sexuality: Gift and Trust" | Pastor Rebecca Shjerven<br>Pastor Joanna Robinson | "                          |

### Tuesdays

| Time       | Title   | Leader       | Location                                    |
|------------|---|--------------|---|
| 10:00 a.m. | Making Difficult Decisions                              | Dick Rodning | Mordvedt Center at TLH*                     |
| 5:30 p.m.  | "Fully Alive" Women's Bible Study<br>Begins October 6th | Sheri Maiura | Fireside Room<br>(childcare in the nursery) |

### Wednesdays

| Time       | Title   | Leader                  | Location                     |
|------------|---|-------------------------|------------------------------|
| 9:30 a.m.  | Women's Study<br>Begins October 14                                  | Ruth Leistekow          | Parish Commons Classroom 1   |
| 12:00 p.m. | Revelation  | Pastor Rebecca Shjerven | Forza Coffee<br>21st & Pearl |
| 6:00 p.m.  | Church Night Bible Study<br>"Letter to the Galatians"               | Pastor Rebecca Shjerven | Parish Commons Classroom 1   |
| 8:00 p.m.  | Devotional Classics Discussion<br>Online discussion group available | Pastor Rebecca Shjerven |                              |

### Thursdays

| Time      | Title   | Leader       | Location                |
|-----------|---|--------------|-------------------------|
| 1:30 p.m. | Lutheran Women Today Bible Study<br>Begins October 29th | Sonja Yeager | Mortvedt Center at TLH* |

\*TLH: Tacoma Lutheran Home

# congregational cave



## Wednesdays at St. Mark's

Dinner will be served continuously from 5:15-7:00 p.m. Come at whatever time works best for you and your family.

Nursery care will be provided from 5:00-8:00 p.m. for children 3yrs and younger.

| Time           | Title                                     | Location                   |
|----------------|---|----------------------------|
| 5:15-5:45 p.m. | Babies of St. Mark's                      | Music Wing Choir Room      |
| 5:15-5:45 p.m. | Joyful Noise Choir (4yrs - 1st Grade)     | Music Wing Choir Room      |
| 5:45-6:30 p.m. | Jubilation Choir (2nd Grade - 5th Grade)  | Music Wing Choir Room      |
| 6:00-7:15 p.m. | JR ALYVE (1st & 3rd)/SR ALYVE (2nd & 4th) | Youth Room                 |
|                | Adult Study                               | Fireside Room              |
|                | Faith Journey                             | Parish Commons Classroom 1 |
|                | Children's Faith Journey                  | Children's Faith Center    |
| 6:00-7:30 p.m. | Worship Team                              | Sanctuary                  |
| 6:30-7:15 p.m. | Chimes Choir                              | Music Wing Bell Room       |
| 7:15-8:00 p.m. | St. Mark's Ringers                        | Music Wing Bell Room       |
| 7:30-8:00 p.m. | Prayer Around the Cross                   | Parish Commons             |
| 8:00-8:30 p.m. | Devotional Classics Discussion            | Parish Commons Classroom 1 |

## September 2009 Church Council Highlights

The Council approved new Music Ministry proposals, modified job descriptions and related budget adjustments, effective Oct. 1, as follows: **1.** Danielle Lemieux will become the Director of Music Ministry for Children and Youth, responsible for developing and coordinating the overall music activities of children and youth as well as leading the adult bell choir. This will be a .75 FTE position. **2.** Cooper Sherry will become the Director Music for Traditional and Blended Worship, responsible for planning Sunday worship for the 8:30 and 11:00 a.m. services as well as seasonal and special services as needed. This will be a .4 FTE position. **3.** Darren Kerbs will become the Director of Music for Contemporary Worship, continuing his current responsibilities. **4.** The reduction of Danielle's FTE from 1.0 to .75 and the increase of Cooper's FTE from .25 to .4 will result in a net budget reduction of 10 percent for those two positions combined. Pastor Jan remarked that the changes for both Danielle and Cooper reflect their desires and perceptions of calling.

Pastor Jan reported that four individuals have been interviewed for the half-time Parish Administrator position and that the search is continuing. John Wascher will continue to fill in for this position until someone is hired. The Leadership Development Team worked on the Music Ministry proposals this month and will be working on the job description for the half-time Coordinator of Ministry position in October.

Pastor Rebecca reported on the expanded education programs for adults, children and youth. She will be attending a continuing education workshop on Oct. 6-9.

Pr. Jan reported that the remodeling projects are on track to be finished this fall. Because of modifications in the projects and the work of volunteers the work will be finished under budget.

Treasurer's Report: For the month of August, total expenses were 4.6% over budget while total income was 12.4% below budget. For the year to date, total expenses are 3.9% below budget and total income is 8.9% below budget. Pr. Jan attributed the relatively high August expenses to quarterly insurance payments. He also stated that income is lower than seasonal expectations and that the line of credit may need to be used if the deficit is not made up in coming months.

# Seasonal Flu Vaccine Clinic

By: Ruth Saathoff, Parish Nurse

Page 6

The Viewpont

No. 10



The single best way to protect against the flu is to get vaccinated each year. This year the Parish Nurses are offering a Seasonal Flu Clinic at St. Mark's on **October 18, 2009**. This year we have ordered 200 doses (last year only 50) of the seasonal vaccine to be available during the morning hours during and after Sunday morning services for your convenience and free of charge. The vaccine is provided by the Franciscan Health System.

#### THE FLU SHOT:

The "flu shot" is an inactivated vaccine, containing killed virus, that is given with a needle, usually in the arm. The flu shot is approved for use in people older than 6 months, including healthy people and people with chronic medical conditions. However, St. Mark's clinic will be available only for adults over 19 years of age.

#### THE VACCINE:

Each vaccine contains three influenza viruses: 1 A (H3N2) virus, 1 A (H1N1) virus, and 1 B virus. The viruses in the vaccine change each year based on international surveillance and scientists' estimations

about which types and strains of viruses will circulate in a given year. About 2 weeks after vaccination, antibodies that provide protection against influenza virus infection develop in the body.

#### THE 2009 H1N1 FLU:

Seasonal flu vaccines (such as given in our clinic) will not provide protection against the 2009 H1N1 influenza (sometimes called swine flu). Vaccines to prevent the 2009 H1N1 virus have not yet been licensed; however, initial doses of licensed vaccine are expected to be available by mid-October and will first be offered to healthcare workers and those in at-risk groups.

#### CHILDREN 6 MONTHS TO 19 YEARS:

This age group should see their Health Care Provider for administration of the vaccine available as a shot or a nasal-spray (a live, weakened flu virus) called LAIV for ages 2 and over.

#### WHO SHOULD/SHOULD NOT GET VACCINATED:

People who should get vaccinated each year are:

1. Children aged 6 months up to their 19th birthday
2. Pregnant women
3. People 50 years of age and older
4. People of any age with certain chronic medical conditions
5. People who live in nursing homes and other long-term facilities
6. People who live with or care for those at high-risk for complications from flu (health care workers, caregivers of persons at high-risk, caregivers of children less than 6 months of age)

People who should not get vaccinated:

1. People who have a severe allergy to chicken eggs
2. People who have had a severe reaction to an influenza vaccination
3. Children less than 6 months of age (vaccine not approved for this age group)
4. People who presently have a moderate-to-severe illness with a fever

Information provided by the Center for Disease Control and Prevention. For more information or answers to questions contact Ruth Saathoff at 851-1584.



#### Blood Pressure Screening

Sunday is **October 25th**. Parish Nurses will be in the narthex all morning to take blood pressures.

## Parish Nursing Events

**Blood Mobile** at St. Mark's on October 18, 2009. Sign-up outside church office.

**Trim and Fit** started September 28 from 7-8:30 pm in the Parish Commons Classroom 2. It is an opportunity for those who want help with weight management. Jennifer Wolbrecht, a member of St. Mark's, has prior experience in this area and is offering a chance to learn more about weight management and will offer one-on-one counseling to those who attend. There is no charge for this program.

**Exercise Classes for Seniors** continue every Monday-Wednesday-Friday in the Parish Commons Classroom 2. Open to all Seniors. No floor exercises. Contact Jeanne Forseth (253-752-2275) for more information.

**CPR Class** at the Tacoma Elks Lodge Sunday, October 11. Call 594-7979 or [www.CPRSunday.net](http://www.CPRSunday.net) to reserve your spot.

## Keys and Building Access Change

St. Mark's is in the process of changing the exterior locks. This change will take place in the next month. There will be no keys reissued. Access to the church will be by card readers only (and the only accessible door with the card reader is the door near the fountain/office entrance). These cards will be available from Jan Pence in the main office.

The facility has many entrances and exits and the goal is to keep the building as secure as possible. If you use the building for an event, please make sure you lock all doors and windows when you leave the building. Creation of a new building use policy is underway and will be made available when it is ready. A security system in place however charges for false alarms are expensive. Be sure you are familiar with the alarm system before you access the building. If you lose or misplace a card reader, a fee will be charged. Again, the goal is to make St. Mark's a safe and welcoming space for all.

If you have questions, please contact Chuck Droubay at 253-759-6720.



## Fall Retreat

The Women of St. Mark's gather annually for fellowship and bible study. This event highlights a guest speaker active in mission work.

In 2009 the retreat will take place **October 3rd** and be held at Carol Paulson's home at 517 Monterey Lane, Fircrest. The gathering will begin at 9:00 a.m. Pat Lelvis will speak about her mission work in Ecuador. Please bring a dish for lunch. If you are interested in attending contact Carol Paulson at 253-864-6838 or Elaine Rodning at 253-761-9198. Carpooling is available.

# October 2009

| Sun   | Mon  | Tue  | Wed  |                                  |
|---|--|--|--|----------------------------------|
|   |  |  |  | 1<br>5:<br>C<br>5:<br>7:         |
| 4<br>8:30, 9:45 & 11 Worship<br>9:30 Sunday School<br>8:30, 9:45 & 11 Adult Classes<br>12:15 Faith Journey  | 5<br>9:00 Quilters<br><br>7:00 Boy Scouts  | 6<br>10 Bible Study @ Mortvedt<br>1:00 Staff Meeting<br>5:30 Fully Alive Bible Study<br>7:00 Bells of St. Mark's<br>7:00 Outreach Team   | 7<br><i>10 Preschool Chapel</i><br><i>Noon Bible Study @ Forza</i><br><i>Church Night Activi-</i><br><i>ties (See Box)</i><br><i>6:00 JR ALYVE</i>   | 8<br>10<br>5:<br>7:              |
| 11<br>8:30, 9:45 & 11 Worship<br>9:30 Sunday School<br>8:30, 9:45 & 11 Adult Classes<br>12:15 Faith Journey   | 12<br>9:00 Quilters<br><br>7:00 Boy Scouts   | 13<br>10 Bible Study @ Mortvedt<br>1:00 Staff Meeting<br>5:30 Fully Alive Bible Study<br>7:00 Bells of St. Mark's                        | 14<br>9:00 Visitation Team<br>9:30 Women's Bible Study<br>10:00 Pastor's Fellowship<br>10:00 Preschool Chapel<br>Noon Bible Study @ Forza<br>Church Night Activi-<br>ties (See Box)<br>4:30 Peace Com-<br>munity Dinner<br>6:00 SR ALYVE | 15<br>5:<br>7:                   |
| 18<br>Pastor Steve Ray Preaches<br>8:30, 9:45 & 11 Worship<br>9:30 Sunday School<br>8:30, 9:45 & 11 Adult Classes<br>12:15 Faith Journey<br>Blood Drive<br>Flu Shot Clinic -Par-<br>ish Commons (Rm. 2) | 19<br>9:00 Quilters<br>6:00 Gay Straight Alli-<br>ance Potluck Dinner<br>7:00 Boy Scouts | 20<br>10 Bible Study @ Mortvedt<br>1:00 Staff Meeting<br>5:30 Fully Alive Bible Study<br>6:30 Church Council<br>7:00 Bells of St. Mark's | 21<br>9:30 Women's Bible Study<br>10 Preschool Chapel<br>Noon Bible Study @ Forza<br>Church Night Activi-<br>ties (See Box)<br>6:00 JR ALYVE   | 22<br>5:<br>7:                   |
| 25<br>8:30, 9:45 & 11 Worship — Af-<br>firmation of Baptism / Confir-<br>mation (@11:00 a.m. service)<br>9:30 Sunday School<br>8:30, 9:45 & 11 Adult Classes<br>12:15 Faith Journey<br><br>Quilt Sunday | 26<br>9:00 Quilters<br><br>7:00 Boy Scouts   | 27<br>10 Bible Study @ Mortvedt<br>1:00 Staff Meeting<br>5:30 Fully Alive Bible Study<br>7:00 Bells of St. Mark's                        | 28<br>9:30 Women's Bible Study<br>10 Preschool Chapel<br>Noon Bible Study @ Forza<br>Church Night Activi-<br>ties (See Box)<br>6:00 SR ALYVE   | 29<br>1:<br>St<br>9:<br>5:<br>7: |

# St. Mark's Lutheran Church by The Narrows

| Thu   | Fri | Sat   |   |
|---|-----|---|---|
| 3:30 Executive Committee<br>3:30 Youth Music Drama<br>3:30 Chancel Choir  | 2   | 3<br><br>9-11 Celebration Ensemble<br>9:30 Women's Retreat @ Paulsons<br>10:00 Blessing of the Animals<br><br>Let Justice Roll — Holden Weekend for Sr. High Students | Weekly Parish Nurse Hours:<br><br>Sunday - 9:30-11:00 a.m.<br>Wednesday-4:00-7:30 p.m.<br>Thursday - 9:00—noon  |
| 10:30 Caregivers Meeting<br>3:30 Youth Music Drama<br>3:30 Chancel Choir  | 9   | 10  | Weekly Nursery / Childcare is offered:<br>Sundays — 8 a.m.-12:15 p.m.<br>Wednesdays—6:00-8:30 p.m.<br><br>Beginning 9/23<br>Wednesdays - 5:00-8:00 p.m.   |
| 5:30 Youth Music Drama<br>3:30 Chancel Choir  | 16  | 17<br><br>Confirmation Retreat<br><br>3:00 Elaine Lindley — Piano Recital   | Exercise Class for Seniors<br><br>10 a.m.—Monday, Wednesday, and Friday   |
| 2:30 Youth Music Drama<br>3:30 Chancel Choir  | 23  | 24<br><br>10 Confirmation Brunch<br>12:30 Serve at Nativity House<br><br>3:00 Wedding Reception — Diane & Russell Gonder  | Wednesday Church Night Activities<br>5:15-7:00 p.m. dinner<br>5:15 Babies of St. Mark's<br>5:15-5:45 Joyful Noise Choir<br>5:45-6:30 Jubilation Choir<br>6:00 Worship Team<br>6-7:15 JR/SR ALYVE<br>6:00-7:15 Faith Journey<br>6:00-7:15 Adult Bible Study<br>6:30-7:15 Children's Chimes<br>7:15-8:00 St. Mark's Ringers<br>7:30 Prayer Around the Cross<br>8:00 Bells of St. Mark's<br>8-8:30 Devotional Classics Disc. |
| 9:30 Women's Bible Study @ Mortvedt Ctr.<br>3:30 Viewpoint Assembly<br>3:30 Youth Music Drama<br>3:30 Chancel Choir | 30  | 31  |   |

# Peace & Justice Ministry



**To others, through others.**

By: Vangie Billingsley

## SCHOOL KITS

Lutheran World Relief organizers are delighted with the quick response to the School Kit ministry. Most of the school bags have been returned with the needed supplies plus extras. Thank you for your generosity. 125 kits have been checked & boxed.

If you have not returned the school bag filled with the items on the note please do so as soon as possible. They must be checked, counted, weighed, and properly packed and ready for shipment the 1st week end in November.

Many thanks to all who brought gifts of all the items needed to fill many bags. Many more children will be able to attend school because of your thoughtfulness.

Quilters moved into their new space - Parish Commons. Come up and see how the quilts are made for Lutheran World Relief on Monday

mornings from 9:00 a.m. to 12:00 p.m.. At 10:30 we have coffee, tea, and a snack. You are welcome to join us.

## Biggest Need Now

More hands are needed to help tie the quilts to keep up with Sandy Bridges who sews all the quilt levels together. It takes two to each space. If there were four more people to tie the quilts we could add another person to sew the quilts and more quilts could be produced.

Those who are veterans at this job will teach you quickly. Help is also needed in other areas of the quilting process. The need is great. Can you help?

L.W.R. Shipped Worldwide IN 2008 455,798 quilts, 193,665 school kits, 133,500 health kits, 1,033,640 layettes, 34,875 sewing kits, and 122,418 pounds of soap.

In 2008 we shipped 205 quilts, 22 blankets, 214 school kits, 69 health kits, 180 layettes, 14 sewing kits, and 38 pounds of

soap. 2009 totals are expected to be higher. Four quilts went to Mexico with house building crews, and 12 high school graduates each received one.

Quilts are also given to each adult who is baptized. Another ministry group make the quilts for the infants and young children who are baptized.

Questions? Call Vangie Billingsley, 756-7766

Most of all it is fun. Try it. You will like it.



## Somali Tutoring

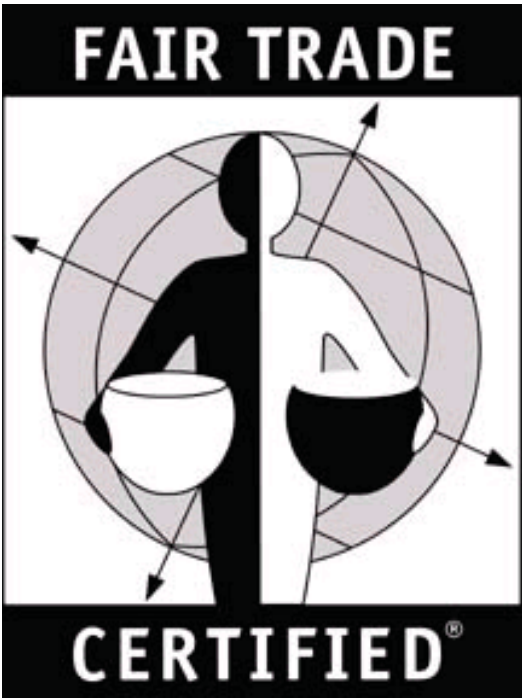
Volunteers spend time with Somali Refugees tutoring them in various types of school work. Work for this school year will begin in October. There is a need for people to provide healthy snacks for the hungry students.

The tutoring group is in need of the following menu items: peanut butter, bread, jam, grahan crackers, cookies and juice (no red juice or chips).

There will be a box in the Narthex where donation can be left.

For more information contact Elaine Rodning at [dicnelan@q.com](mailto:dicnelan@q.com) or 253-761-9198.





By: Melanie Summerour

**What** -- Fair Trade labeling guarantees:

- A fair price to farmers
- Decent working & living conditions for farmers, farm workers & their families
- Environmentally-friendly farming practices
- Direct trade relationships between farmers & buyers

**Why** – By purchasing Fair Trade certified products, we as consumers help build a more just economic system & support responsible stewardship of the earth.

**Who** – The Council of St. Mark’s has affirmed the congregation’s commitment to Fair Trade, which is most concretely practiced by providing only Fair Trade coffee & tea at all church events, such as fellowship times, funerals & special programs.

**How** – As Fair Trade products are more expensive, the Fair Trade Team helps subsidize the budget cost by selling Fair Trade products monthly on the 1st Sunday & by hosting a bazaar annually. When you purchase coffee, tea or chocolate with, \$0.25-2 of each purchase goes to fellowship coffee costs.

# Come Hear the Story of God’s Global Mission

By: Pastor Jan Ruud

During the month of October, we have the opportunity to hear from two people who are engaged in the work of God in other parts of the world.

First, we will welcome Pastor Dean duToit from the Evangelical Lutheran Church in Namibia. Pastor duToit will be visiting for an entire week, beginning on October 1st. He will preach at all three services on October 4th and he will take part in many of the activities that occur at St. Mark’s while he is here. This will give children, youth, and adults the chance to hear about the joys and challenges that are facing the people and the church of Namibia in this present age. I’m sure that he will teach some songs and tell unique stories along the way. In the past, many members of our congregation have traveled to Namibia, including John and Kari Fricke, who served there as missionary teachers. Now, it is our turn to welcome this brother in Christ into our own congregation and to share our faith and our stories with him. If you would like to host Pastor duToit in your home for 2-3 nights, please contact Pastor Ruud by Sunday, September 27th.

Later in October, we will welcome Pastor Steve Ray, who has been engaged in mission work with the people of China for many years. Steve has just returned from a summer of hosting mission teams from the U.S. who have traveled to China as volunteer teachers and servants. This is something very close to home for members of St. Mark’s, since we have had several members of our congregation do this in the past. Not long ago, Glenda Larsen spent most of the summer serving in this way. Pastor Ray is also offering to facilitate a St. Mark’s mission trip to China in July of 2010. He will be preaching at all three morning services on October 18 and then hosting an Interest Meeting at 12:15pm that same day for anyone who would like to hear more about the proposed mission trip. This would be an inter-generational mission trip, open to anyone who is high school age or older.

**Food Bank Suggestions  
October  
Baby Food & Diapers**

# Greater Legislation for Bread

By: Norm Orth

Better food legislation is in process.

Bread for the World is becoming increasingly engaged in new initiatives by Congress and the administration to make foreign assistance more effective and increase it's focus on agriculture. This is an area of key importance to hungry people in impoverished countries.

"We have so many opportunities now to help hungry and poor people," said Bread for the World President David Beckmann. "This is exciting. But it also means more effort , not only on Bread's staff but from our members.

Thanks to the persistent work of Bread activists, H.R. 2139, the Initiating Foreign Assistance Reform Act of 2009, added its 100th co-sponsor on July 31, hours before the House of Representatives adjourned for its August recess.

Building a strong bipartisan group of co-sponsors for the House bill sends a clear message to congressional leaders and the administration. Elected representatives, responding to messages from constituents, are serious about reforming the country's foreign assistance programs. This milestone would not have been reached without your phone calls, visits, personal letters, and emails.

In other good news, a new bipartisan group of six senators led by Senate Foreign Relations



Committee Chairman John Kerry (D-MA) and ranking member Richard Lugar (R-IN) introduced S. 1524, the Foreign Assistance Revitalization and Accountability Act of 2009. Both H.R. 2139 and S.1524 are strong building blocks in the effort to make U.S. foreign assistance more effective in fighting hunger and poverty. The House bill calls on the president to develop and implement a comprehensive national strategy for global development.

Sisters and Brothers, the story continues as the great legislative work is being done and sponsored by Bread for the World supporters. They need our ongoing support in this crucial outreach mission to the world. Support them with October Hunger Walks each Sunday. We, through them, can make a great difference for hungry people.

Thanks for your gifts to Nativity House in August. The gifts fed numerous people right here at home.

# Stewardship Ministry

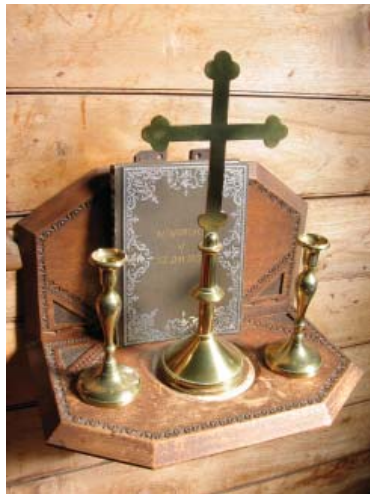
## Learn, Serve and Grow: *Ministry Opportunities at St. Mark's*

Thank you to those who have picked up the copy of the new "Learn, Serve, and Grow" booklet that is available in the narthex at church. We are even happier that many of you have returned the Response Form to us, indicating how you would like to be involved in God's mission here at St. Mark's. The booklet gives up-to-date information about every volunteer service opportunity at St. Mark's, and the response form is the best way to share your desire to serve with us. If you have not picked up your booklet and response forms yet, please do so as soon as you are able.

We want to hear from everyone in your household, including the children and youth! Have every person fill out a form, and, if they need help, you can provide assistance as needed. The youngest member of our congregation to submit a response form is Elizabeth Conway, who is 4 months old. Elizabeth signed up for "Babies of St. Mark's" in the music ministry section and indicated that some of her special gifts/abilities that equip her for ministry are being "smiley, alert, and friendly."

Another option: This year, the full version of the "Learn, Serve, and Grow" booklet is also available on the St. Mark's website, along with the response form which can either be downloaded and emailed or returned to the church office. Just go to the home page at [www.smlutheran.org](http://www.smlutheran.org) and click on the links.

We want to thank everyone who has returned their "Learn, Serve and Grow" form to us, and we look forward to hearing from the rest of you in the very near future.



## Increased Offerings Are Needed To Sustain Vital Ministries

By: Pastor Jan Ruud

Over the summer months, offering income was less than needed to give full support to ministry here at St. Mark's, so we have had to borrow money from our line of credit at the bank. We have been holding expenses down, but, by the end of August, our offering income was about \$40,000 less than projected for the first eight months of the year.

It is not uncommon for offerings to decrease in the summer time, when many people travel and forget to stay current with their plan for giving, but now we are needing a strong comeback.

If you have made a Plan for Giving in 2009 and you are currently lagging behind, please make it a priority to get caught up in October and to continue strong support through the end of the year. If you have not made a Plan for Giving, please take this opportunity to give generously and then consider making a plan for the coming year that will help you connect your faith with your monthly gifts and expenditures. More and more of us are finding this spiritual practice of planned giving to be a source of joy and peace in our lives.

## August and YTD Finance Report

| <u>General &amp; Benevolence Fund</u> | August     | YTD thru August |
|---------------------------------------|------------|-----------------|
| Total Gen & Benev Fund Income         | \$50,611   | \$418,926       |
| Planned Benevolences                  | \$2855     | \$33,293        |
| Ministry Team expenses                | \$4179     | \$20,777        |
| Administrative expenses               | \$7081     | \$36,990        |
| Property expenses                     | \$3574     | \$32,524        |
| Staff expenses                        | \$43,360   | \$337,521       |
| Total Gen & Benev Fund Expenses       | \$61,049   | \$461,105       |
| Operating Difference                  | (\$10,438) | (\$42,179)      |

# The Depth and Breadth of Stewardship Theology

By: the Rev. Michael Meier

Deeds of caring In Matthew 25:31-46, Jesus describes the last judgment, where the sheep and the goats are divided. The six deeds of caring service to others described there are part of our response to God. Those six deeds are feeding the hungry, providing drink for the thirsty, welcoming the stranger, clothing the naked, taking care of the sick and visiting the prisoners. In medieval times these six were joined by a seventh—providing comfort to the bereaved.

Today, these seven acts of mercy provide a template for our activities on behalf of others. We follow the example of Jesus and in obedience to the God whom we worship, we serve the needs of others. If worship of God is the highest form of stewardship, then care of and for the people created in the image of God must be the next most important expres-

sion of stewardship. What we do must serve the lives of others or it is not honoring God. It is the plan of God that we should serve the people in our local and global community with the gifts of our selves, our time and our possessions. We are to do this as individuals in our homes, neighborhoods and workplaces. But, we do this especially well when we join with others in the living organism we call the Body of Christ, the Church, where the whole is larger and more effective than the sum of its parts.

Again, we offer the caution that our best service does not earn us God's favor, but rather reflects the favor of God already bestowed upon us.

---

## DEEDS OF CARING

Feeding the hungry  
 Providing drink for the thirsty  
 Welcoming the stranger  
 Clothing the naked  
 Taking care of the sick  
 Visiting the prisoners  
 Comforting the bereaved

---

# Worship & Music Ministry

## Worship & Music Schedule: October 2009

|  |  |
|--|--|
| Thurs., October 1                        | YOUTH MUSIC DRAMA TEAM auditions, 5:30-7:30 p.m.   |
| Sat., October 3                          | CELEBRATION ENSEMBLE practice, 9-11 a.m.   |
| Sun., October 4                          | YOUTH MUSIC DRAMA TEAM auditions, by appointment only (contact Caresse at <a href="mailto:caresse@smlutheran.org">caresse@smlutheran.org</a> )                               |
| Tues., October 13                        | WORSHIP & MUSIC TEAM meeting, 5:00 p.m.  |
| Sun., October 25<br>(Reformation Sunday) | 8:30 Service: CELEBRATION ENSEMBLE, Brass Unlimited<br>9:45 Service: WORSHIP TEAM, BELLS OF ST. MARK'S<br>11:00 Service: CHANCEL CHOIR, BELLS OF ST. MARK'S, Brass Unlimited |
| Wed., October 28                         | INTERGENERATIONAL PUMPKIN CARVING, 6:00-7:15 p.m.<br>(CHILDREN'S CHIMES practice from 6:30-6:45 p.m.;<br>*All other music groups practice at regular times)                  |
| Thurs., October 29                       | Youth Music Drama Team Leaders Meeting, 7:30 p.m.  |

# Changes In Leadership Roles Of Music Ministers Inspired By Mission Goals

At our congregational meeting in January of this year, we adopted a fifth mission goal at St. Mark's. Is it to "nurture a congregational culture which engages all generations in the faith development of children, youth and families." This has led to many creative approaches to ministry, and it has been an important factor in the decision to change Danielle Lemieux's job description from Director of Music Ministry to Director of Music Ministry for Children and Youth. This means that all of Danielle's time and energy can now be focused on faith development of children, youth and families through the gifts of music. She will work closely with Pastor Shjerven, Ingelaurie Lisher, Char Leone, Caresse Lemieux, and many others who have leadership responsibilities in our ministry with children and youth. The one exception, for now, is that Danielle will continue to lead the adult bell choir. This new position is ¾ time, giving Danielle the freedom to pursue some of her other professional interests as well.

Another key goal that has emerged from the Music Leadership Team at St. Mark's is to enliven and enrich the 11:00 a.m. traditional service on Sunday mornings. In God's good timing, we have Cooper Sherry on staff and he is excited about the opportunity to help us live into this

goal. Currently, Cooper is in charge of music for the blended service at 8:30 a.m., and now, we have asked him to take on that same leadership role at the 11:00 a.m. traditional service. His new job title, beginning in October, is Director of Music for Blended and Traditional Worship. Cooper has a deep love and respect for traditional music and liturgy, so this truly connects his gifts with our mission at an important time. Cooper's new position is at .4 FTE, so it is a little less than ½ time. Overall, these changes have not increased the budget in any way, since Danielle is shifting to ¾ time while Cooper is taking on this new responsibility. Darren nKerbs continues to have full responsibility for the 9:45 a.m. service in his role as Director of Music for Contemporary Worship.

The Church Council unanimously affirmed these changes at their September meeting, citing the way in which they strengthen our overall mission as a congregation and utilize the gifts of our music leaders in effective and creative ways.

## Contemporary Service Music Rotation



4-Oct  
Russ Hillman  
Ann Hillman  
Kelly Indahl  
Kris Moor  
Dale Wright  
Scott Moor  
Nate Webers

11-Oct  
Anna Ahrens  
Kim Bucklin  
Gayle Martello  
Tim Spaulding  
Dale Wright  
Tony Daniels  
Matt Oellerich  
Nate Webers

18-Oct  
Pat Buck  
Gayle Martelli  
Jenny Myers  
Kris Moor  
Chris Spaulding  
Tony Daniels  
Scott Moor  
Nate Webers

25-Oct  
Anna Ahrens  
Pat Buck  
Kelly Indahl  
Kris Moor  
Tim Spaulding  
Scott Moor  
Matt Oellerich  
Nate Webers  
Craig Cootsana

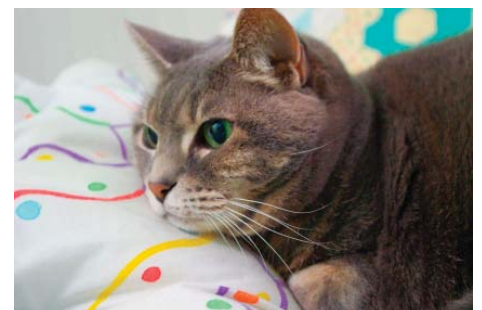
For more information about St. Mark's Contemporary worship service contact Darren Kerbs at [darren@smlutheran.org](mailto:darren@smlutheran.org)

## Annual Blessing Of The Animals

Animals of all species, including human, are welcome to join us on Saturday, October 3 at 10:00 a.m. for a unique ceremony which coincides with the feast day of St. Francis of Assisi. We will gather in the courtyard at church for a special rite which includes prayers and blessing for the animals that share life with you. Pets of all kinds are welcome, provided they are on a leash or in a cage/carrier. The ceremony will last about ten minutes.

In his often-quoted "Sermon to the Birds", St. Francis said: "My little sisters, the birds, you owe so much to God, your Creator, and always in every place you ought to praise Him, for He has given you liberty to fly about everywhere, and has also given you double and triple raiment... God clothes you, you and your children; wherefore your Creator loves you much, seeing that He has given you so many benefits; and therefore, my little sisters, be-

ware of the sin of ingratitude, and study always to give praises unto God." Good counsel for birds, and humans! We hope you can join us!



# Youth & Family Ministry



## Middle School Ministry: JR ALYVE

6-8th Grade (2009-2010 school year)

- **JR ALYVE Youth Group Night** moves back to Wednesday nights beginning October 7th 6-7:15 p.m. This group meets the 1st and 3rd Wednesdays of each month in the Youth Wing. Fall dates: Oct. 7 and 21, Nov. 4 and 18, Dec. 2 and 16. Thanks to Linda Wimberley for coordinating and leading this group.
- **Corn Maze--Sunday, October 25** 1:30-6:00 p.m. Cost: \$15.00 for maze and dinner. Bring extra \$\$ to purchase a pumpkin. Eat lunch before you arrive.
- Thanksgiving Dinner - **Sunday, November 22nd**. Be on the look out for more information—including how you can get involved in planning, preparing and setting up the meal.

### Fall Nursery/Childcare Schedule

Sundays:  
8:00 to 12:30 p.m.  
12:30-2:00 p.m.

Tuesdays:  
5:15-7:00 p.m., during Women's Bible Study

Wednesdays:  
5:00-8:00 p.m., during Church Night

1st Saturday of each month:  
9:00-11:00 a.m.

\*Please contact Nursery Co-Coordinator Cindy Johnson or Teresa Handy regarding nursery hours and times. Free will donations are gladly accepted to help subsidize cost of the youth who work in the nursery during the week.

Entertainment  
Books are now on  
sale. Get yours  
today from the  
church office for  
only \$20.00.

## High School Ministry: SR ALYVE

9-12th Grade (2009-2010 school year)

- **SR ALYVE Bible Study and Discussion group Wednesday, October 14 from 6:00-7:15 p.m.** in the Youth Room. Wednesday, October 28th—Pumpkin carving 6-7:15 for youth and their families. Bring your own pumpkin. This group meets the 2nd and 4th Wednesdays of each month in the Youth Room. Fall dates: Nov. 11, Dec. 9.

You are the salt  
of the Earth.

Matthew 5:13



## From the Office

### Address Changes:

#### David & Patty Berg

10336 Kopachuck Dr. NW  
Gig Harbor, WA 98335  
Ph. 253.265.6452

#### Arthur & Bernice Bowers

1301 N. Highlands Pkwy., Apt. 309  
Tacoma WA 98406  
Ph. 253.756.7799

## October Anniversaries

|            |   |
|------------|---|
| October 1  | Kelvin & Pat Hilfiker                             |
| October 5  | Tom & Christy Burkhart<br>Gordon & Bernice Friend |
| October 7  | Brian & Kate Compton                              |
| October 8  | Norm & Maizie Orth                                |
| October 9  | Ray & Nancy Diaz<br>Tim & Sarah McCarthy          |
| October 10 | Tony & Linda Buhr                                 |
| October 11 | Eric & Carole Vogel                               |
| October 14 | John & Dorothy Reitan                             |
| October 15 | Hans & Vivi Bjornen                               |
| October 21 | Allan & Sally Ann McLean                          |
| October 23 | Jim & LaVonne Carbone                             |

## Pastoral Acts

### Baptism:

Benjamin Francis Anderson

Born: September 19, 2008  
Baptized: September 20, 2009  
Parents: Christian & Erika Anderson  
Sponsors: Carl & Julie Anderson, Magne & Kristine Myrmo

### Death:

Ethel Louise McWherter  
Died August 26, 2009  
Service at Mt. View Cemetery, September 5, 2009

To God's family at St. Mark's,  
My thanksgiving for your healing  
prayers. The corneal transplant I  
had in August was painless, and  
my left eye is improving gradu-  
ally. My heart utters "Amen" to  
the song's words, "Open our eyes,  
Lord, we want to see Jesus..."

In Christian love,  
Jeanne Forseth

## October Birthdays

|           |   |            |  |            |  |
|-----------|---|------------|--|------------|--|
| October 1 | Carl Reese<br>Kari Schoenrock<br>Lindsey Spaulding  | October 9  | Casey Patrick  | October 20 | Alexis Conley<br>Auna Doyle                                |
| October 2 | Howard Shouse<br>Karen Silverthorn  | October 10 | Tony Buhr<br>Kay Walter<br>Linda Wimberley                             | October 21 | Shelly Hutson<br>Oleg Lindholm                             |
| October 4 | Allison Berg<br>Hailey Berg<br>Lisa Daniels<br>Brent Johnson<br>Tavi Jung<br>LaVonne McClelland<br>Libby Postvoit | October 11 | Jen Droubay  | October 22 | Caroline Irwin   |
| October 5 | Jenna Comstock<br>Gordon Friend<br>Dale Houg  | October 12 | Chris Battle<br>Karl Hoseth<br>Thomas Irwin                            | October 23 | Michael Callow<br>Janet Pence                              |
| October 6 | Kallie Gray<br>George Phelps  | October 13 | Tom Burkhart<br>Adelina Duenhoelter<br>Norm Orth                       | October 24 | Tony Daniels   |
| October 7 | Mike Handy<br>Stephen Hutson  | October 14 | Bill Klancke<br>Barbara Meyers   | October 25 | Berenice Burke<br>Mimi Graves<br>Tony Maiura               |
| October 8 | Katie Avery<br>Brittney Bowe<br>Alex Bunch<br>Ruth Leistikow<br>John Steigerwald                                  | October 15 | Tyler Ahrens<br>Mark Baespflug<br>Doug Durant<br>Deanna Fleischfresser | October 27 | Pam Costa<br>Robert Hasselblad<br>Joan Torfin              |
|           |   | October 16 | Michelle Torres<br>Ruth Young  | October 28 | Kate Compton   |
|           |   | October 17 | John Frazier   | October 29 | Dawne Aho<br>Levin Conway<br>Craig Cootsona<br>Jim Hoiland |
|           |   | October 18 | Katina Bundy<br>Lilly Miller   | October 31 | Carol Grudzien<br>Pr. Rebecca Shjerven                     |
|           |   | October 19 | Kaelee Gala<br>Marci Gala  |            |  |

## Council Members June 2009 through May 2010

|                |                    |          |
|----------------|--------------------|----------|
| PRESIDENT      | Kim Meade          | 759-9817 |
| VICE PRESIDENT | Martin Duenhoelter | 565-5634 |
| SECRETARY      | Rolf Morstad       | 759-0563 |
| TREASURER      | John Wascher       | 503-6765 |

### CHRISTIAN EDUCATION

John Frazier, 312-9313

### CONGREGATIONAL CARE

Karen Grams, 389-1886

### OUTREACH MINISTRY

Elaine Rodning, 761-9198

### PEACE AND JUSTICE

Paula Friedmann, 759-3881

### STEWARDSHIP

Everett Holum, 752-3304

### WORSHIP & MUSIC

John Avery, 759-6365

### YOUTH & FAMILY

Ben Summerour, 857-8872

## Staff

- General Office Email—office@smlutheran.org
- Pastor Jan Ruud—jruud@smlutheran.org
- Pastor Rebecca Shjerven—rebecca@smlutheran.org
- Pastor Otto Tollefson—otollefson@aol.com
- Ingelaurie Lisher, Director of Youth & Families—ingelaurie@smlutheran.org
- Danielle Lemieux—Director of Music Ministry—danielle@smlutheran.org
- Jan Pence, Office Manager/Administrative Assistant—janpence@smlutheran.org
- Lisa Lindholm, Publications—lisa@smlutheran.org
- Pat Buck, Financial Recording Secretary—pbuck@smlutheran.org
- Laura Oellerich, Director of Preschool—preschool@smlutheran.org
- Becki Christian, Custodian and Hospitality Coordinator—beckic924@hotmail.com
- Mike McKeller, Bookkeeper—bookkeeper@smlutheran.org
- Darren Kerbs, Worship Team Director—darrenkerbs@hotmail.com
- Caresse Robertson, Youth Music Drama Team Leader—caresse@smlutheran.org
- Phyllis Bachman, Organist/pianist
- Cooper Sherry, Organist/pianist
- Adam Manley, Sound Technician
- Craig Cootsona, Musician
- Spencer Crenshaw, Facilities Assistant
- Ruth Saathoff, Parish Nurse
- Karen Grams, Parish Nurse
- Helen Bache, Parish Nurse
- Joan Torfin, Parish Nurse
- John Wascher, Interim Parish Administrator

# St. Mark's Lutheran Church by The Narrows

6730 North 17th Street  
Tacoma, WA 98406-1902

Phone: 253-752-4966  
Fax: 253-752-4990  
www.smlutheran.org  
office@smlutheran.org

Non-Profit Organization  
U.S. Postage  
**PAID**  
Tacoma, WA  
Permit NO. 525

RETURN SERVICE REQUESTED



*A Place for Grace*

## Our Mission Statement

*St. Mark's is a people and place for God's grace. We are a baptized and believing people claimed by Christ. Therefore, we call all people to Worship and Witness, Learn and Serve, Share God's Word and Sacraments, Reach Out with Words and Deeds of Love.*

### Worship Opportunities at St. Mark's

*Holy Communion is celebrated every Sunday at our morning services.*

#### **Sunday, 8:30 a.m. —**

This worship service draws on a wide variety of musical traditions for both hymns and special music - from Scandinavian Folk Tunes to Asian or Latin American songs of praise; from medieval chants to African American Spirituals - celebrating the rich variety of music that God has given to the Church.

#### **Sunday, 9:45 a.m. —**

The singing at this service is led by a band which includes piano, drums, bass guitar, and often another lead guitar or acoustic guitar, blending contemporary music with historic elements of worship that are in all of our services.

#### **Sunday, 11:00 a.m. —**

People often call this the "traditional" worship service because we sing well-known hymns from our new Evangelical Lutheran Worship Hymnbook. The Chancel Choir leads the singing, with organ and piano.

#### **Wednesday, 7:30 p.m. - Prayers Around the Cross**

Wednesday evening prayer service will be one which is suited for people of all ages who enjoy a time of singing, praying, lighting candles, and being nourished by the Word of God.

